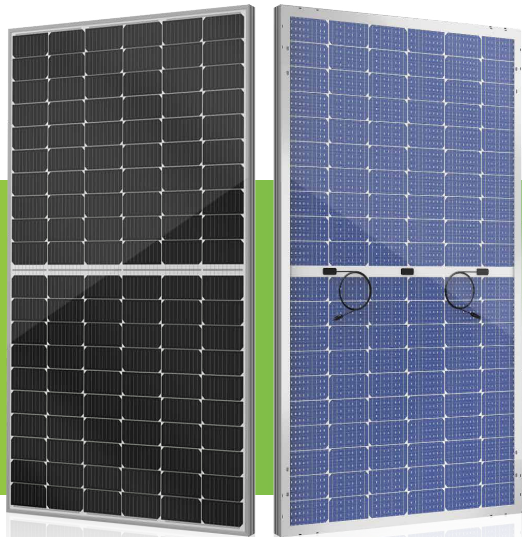


**ELNSM60M-HC-HV Series**

**MBB HC BIFACIAL  
MONOCRYSTALLINE  
PV MODULE  
360-375W**



**Bifacial Series**

Elin redefined the high-efficiency module series by integrating 166mm silicon wafers with multi-busbar and half-cut cell technologies. Sirius panel combined creative technology effectively and extremely improved the module efficiency and power output.

**KEY FEATURES**



Less mismatch to get more power.



Less power loss by minimizing the shading impact.



Competitive low light performance.



Ideal choice for utility and commercial scale projects by reduced BOS and improve ROI.



In stringent environment condition :

- sand, acid, and alkali, hail stones,
- 2400pa wind load and 5400pa snow load.
- PID FREE

**QUALITY SYSTEM**



ISO 9001:2015, ISO 14001:2015, ISO 45001: 2018, ISO 27001:2013, ISO 10002: 2018, ISO 26000:2021, ISO 37001:2016, ISO 50001:2018

**PRODUCT CERTIFICATION**



TS EN 61215, TS EN 61730  
IEC 61215, IEC 61730, IEC 62804 (PID FREE)  
UL 61730-1, UL 61730-2

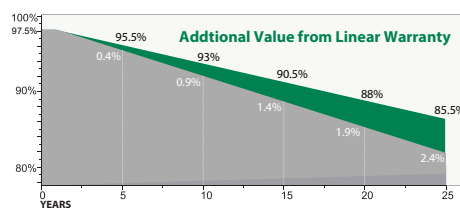
**WARRANTY**



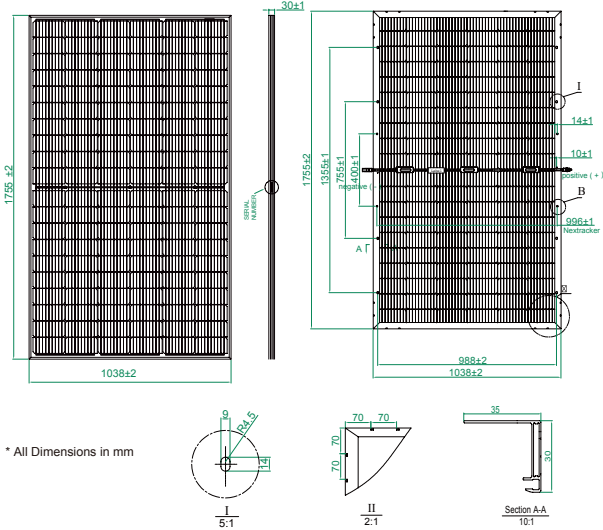
**12** Guarantee On Product



**25** Linear Power Output Warranty



## ELNSM60M-HC-HV Series



### MECHANICAL SPECIFICATIONS

External Dimension	1755 x 1038 x 35 mm
Weight	23.5 kg
Solar Cells	PERC Mono Crystalline 166 x 83 mm (120 pcs)
Front Glass	3.2 mm AR coated tempered glass
Frame	Anodized Aluminum Alloy
Junction Box	IP68, 3 diodes - MC4 Compatible
Output Cables*	4.0 mm <sup>2</sup> , 350mm(+)/350mm(-) veya özelleştirilmiş uzunluk.

\*Output cable lengths should be specified at the time of order.

### PACKING CONFIGURATION

Container	40'HQ
Pieces per Pallet	32
Pallets per Container	24
Pieces per Container	768

Modül Tipi	ELNSM-360-72M-HC-HV		ELNSM-365-72M-HC-HV		ELNSM-370-72M-HC-HV		ELNSM-375-72M-HC-HV	
STC	Front	Back	Front	Back	Front	Back	Front	Back
Maximum Power -Pmp(W)	360	268	365	271	370	275	375	279
Open Circuit Voltage -Voc(V)	41.2	38.5	41.4	38.7	41.6	38.9	41.8	39.1
Short Circuit Current -Isc(A)	11.16	8.88	11.26	8.92	11.34	9.01	11.41	9.08
Maksimum Güç Gerilimi -V <sub>mp</sub> (V)	34.2	31.8	34.4	32.0	34.6	32.2	34.8	32.4
Maximum Power Current -Imp(A)	10.53	8.43	10.62	8.47	10.63	8.55	10.78	8.62
Module Efficiency STC-η <sub>m</sub> (%)	19.76		20.04		20.31		20.59	
Power Tolerance(W)	(0,+4.99)							
Pmax Temperature Coefficient	-0.36 %/°C							
Voc Temperature Coefficient	-0.28 %/°C							
Isc Temperature Coefficient	+0.05 %/°C							

\* Measurement Tolerance +/- 3%  
 STC: Irradiance 1000 W/m<sup>2</sup> module temperature 25°C AM=1.5;  
 NOCT: Irradiance 800W / m<sup>2</sup>, Ambient Temperature 20 °C, AM = 1.5, Wind Speed 1m / s

### REAR SIDE POWER GAIN

Power Gain	10%	15%	20%	25%	30%
Maximum Power -Pmp(W)	413	432	450	469	488
Open Circuit Voltage -Voc(V)	41.8	41.8	41.8	41.8	41.8
Short Circuit Current -Isc(A)	12.55	13.13	13.68	14.26	14.84
Maximum Power Voltage -Vmp(V)	34.8	34.8	34.8	34.8	34.8
Maximum Power Current -Imp(A)	11.87	12.42	12.94	13.48	14.03

### APPLICATION CONDITIONS

Maximum System Voltage	1500VDC
Maximum Series Fuse Rating	20A
Operating Temperature	-40~+85 °C
Nominal Operating Cell Temperature	45±2 °C
Bifaciality	70%±5%
Mechanical Load	Front side 5400Pa/ Rear side 2400Pa

ELiN A.Ş. reserves the right to change the technical specifications and design data in the catalog without prior notice.  
 Made in Türkiye.

### I - V CURVE

