

ELNSM72M-HC-HV-N Series

**MB B HC
MONOCRYSTALLINE
PV MODULE
575 - 590W**



Sirius 182MM_N-TYPE Series

Elin redefined the high-efficiency module series by integrating 182mm silicon wafers with multi-busbar and half-cutcell technologies. Sirius combined creative technology with 182mm_N Type module. This caused effectively and extremely improved the module efficiency and power output.

KEY FEATURES



Less mismatch to get more power.



Less power loss by minimizing the shading impact.



Competitive low light performance.



SMBB Technology
Better light trapping and current collection to improve module power output and reliability.



In stringent environment condition :
• Sand, acid, salt and hail stones,
• 2400pa wind load and 5400pa snow load.
• PID FREE



3 times EL test to ensure best quality.

QUALITY SYSTEM

ISO ISO 9001:2015, ISO 14001:2015, ISO 45001: 2018, ISO 27001:2013, ISO 10002: 2018, ISO 26000:2021, ISO 37001:2016, ISO 50001:2018

PRODUCT CERTIFICATION



TS EN 61215, TS EN 61730
IEC 61215, IEC 61730, IEC 62804 (PID FREE)
UL 61730-1, UL 61730-2

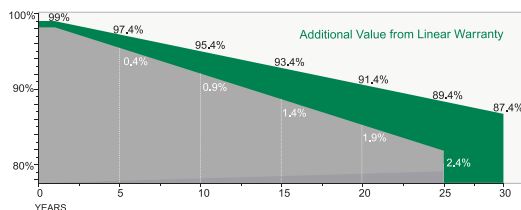
WARRANTY



15 Guarantee On Product



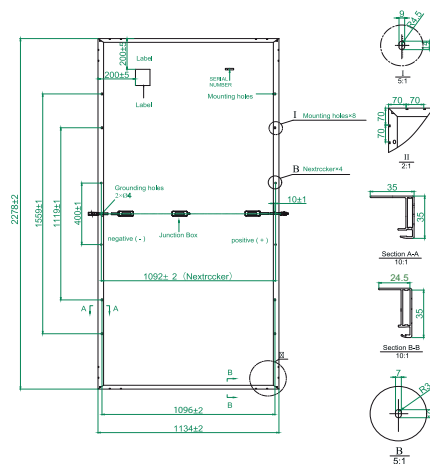
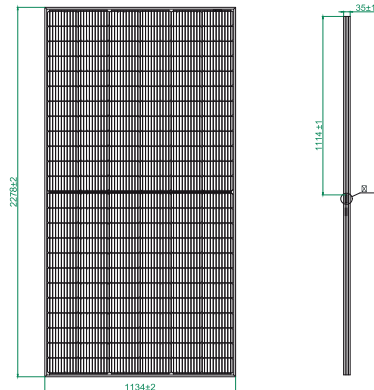
30 Linear Power Output Warranty



ELNSM72M-HC-HV-N Series

ELECTRICAL SPECIFICATIONS

Module Type	ELNSM72M-HC-HV-N-575		ELNSM72M-HC-HV-N-580		ELNSM72M-HC-HV-N-585		ELNSM72M-HC-HV-N-590	
	STC	NOCT	STC	NOCT	STC	NOCT	STC	NOCT
Maximum Power (Pmax)	575Wp	433Wp	580Wp	437Wp	585Wp	441Wp	590Wp	445Wp
Maximum Power Voltage (Vmp)	43.20V	40.63V	43.40V	40.86V	43.60V	41.05V	43.80V	41.24V
Maximum Power Current (Imp)	13.32A	10.66A	13.37A	10.70A	13.43A	10.74A	13.49A	10.78A
Open Circuit Voltage (Voc)	51.90V	49.31V	52.10V	49.50V	52.30V	49.69V	52.35V	49.88V
Short Circuit Current (Isc)	14.01A	11.21A	14.07A	11.26A	14.13A	11.30A	14.19A	11.35A
Module Efficiency STC (%)	22.26%		22.45%		22.65%		22.85%	
Power Tolerance(W)	(0, +4,99 W)							
Maximum System Voltage	1500V DC							
Maximum Series Fuse Rating	25 A							
* Measurement Tolerance +/- 3%								
STC: Irradiance 1000W/m2, module temperature 25°C, AM=1.5								
NOCT: Irradiance 800W/m2, Ambient Temperature 20°C, AM=1.5, Wind Speed 1m/s								



TEMPERATURE CHARACTERISTICS

Pmax Temperature Coefficient	-0.29 %/°C
Voc Temperature Coefficient	-0.25 %/°C
Isc Temperature Coefficient	+0.046 %/°C
Operating Temperature	-40 ~ +85 °C
Nominal Operating Cell Temperature (NOCT)	45 ± 2 °C

MECHANICAL SPECIFICATIONS

External Dimensions	2279 x 1134 x 35 mm	
Weight	27 kg	
Solar Cells	Topcon (144 adet)	
Glass	3.2 mm AR coating tempered glass, low iron	
Frame	Eloksallı aluminium alloy	
Junction Box	IP68,3 diodes	
Output Cables*	4.0 mm ² , 350mm(+)/350mm(-) or customized length	
Mechanical Load	Front side 5400Pa / Rear side 2400Pa	

* Output cable lengths should be specified at the time of order.

PACKING CONFIGURATION

Container	20'GP	40'HQ
Pieces per Pallet	31+4*	31
Pallets per Container	4	22
Pieces per Container	124	682

* 31+4 pieces per pallet is the special package which only suits for container transport.

I-V CURVE

I-V Curve

